

TRULY UNIQUE HOME LIFTS.

THE CATALOGUE



ELTEC
LIFT INNOVATION









OUR EXPERTISE, AT THE SERVICE OF YOUR PROJECTS.

For over 30 years, Eltec Lift has been designing and manufacturing high-performance electric lifting platforms: versatile, reliable and safe home lifts, engineered to integrate seamlessly into residential buildings and public spaces. Each system is carefully developed to deliver comfort, efficiency and a design that adapts naturally to the architectural context.

MADE IN ITALY

Our home lifts and products are entirely developed and manufactured in Italy, representing the ideal balance between innovation and craftsmanship, functionality and aesthetics. Every system is designed to meet the highest technical and regulatory standards.

OUR TEAM, SUPPORTING YOUR PROJECTS

With over thirty years of industry experience, we competently manage even the most complex

installations, offering:

- Electric systems certified with European Energy Class A, in accordance with ISO 25745-2, ensuring maximum energy efficiency;
- Premium-quality components, selected for durability, reliability and performance;
- Flexible design solutions that integrate technical and aesthetic requirements, adapting precisely to the building characteristics and project needs.

Through careful engineering, our systems facilitate the removal of architectural barriers, ensuring full accessibility and comfort for all users, in full compliance with current regulations.

ELTEC LIFT TAKES CARE OF EVERY DETAIL, WITHOUT COMPROMISE

If you are looking for a reliable solution, designed to genuinely enhance the environment in which it is installed while delivering outstanding quality and durability, we invite you to discover our products, as well as our services.

WHY CHOOSE US?

5000+

TAILOR-MADE HOME LIFTS

Each system is carefully designed and optimised to meet specific requirements, with over 5,000 bespoke solutions delivered through craftsmanship, precision and superior quality standards.

5+

COUNTRIES SERVED

An international presence built on trust, technical expertise and consistent support across every regulatory context.

SUSTAINABILITY

A 360° APPROACH

Durable materials, exclusively electric drive systems, optimised energy consumption and responsible manufacturing processes: our ongoing commitment to minimizing environmental impact without compromising on quality.

MADE IN ITALY

AS A CORE VALUE

Technology, finishes and manufacturing entirely Italian: carefully selected components, attention to detail and robustness for a truly Italian product.

STYLE

AND CUSTOMISATION

Fully customisable cabins, doors, finishes and dimensions: every system is tailored to fit the project, not vice versa.

CONSULTING

AND TRAINING

Comprehensive training, technical support and tailored tools: supporting designers, installers and resellers every step of the way.

INDEX

MADE IN ITALY PRODUCTS p. 06

OUR SERIES — HOME LIFT

— HLB p. 10
— HLB+ p. 18
— HLG p. 22

DOORS

— ELSA p. 32
— ELETTRA p. 34
— WINGS p. 36
— B-WINGS p. 38
— REVERSE p. 40
— OUR SELECTION p. 42

CABINS AND FINISHES

— CABIN WALLS p. 46
— CABIN PROFILES p. 64
— FLOORS p. 68
— CEILINGS p. 70
— CONTROL PANELS p. 72
— ACCESSORIES p. 74

STRUCTURES

— ELTEC TA p. 78
— ELTEC AU p. 80

THE COMPANY

— DEDICATED AREAS p. 84
— SUSTAINABILITY p. 86

PRODUCTS MADE IN ITALY, TAILORED FOR USERS AND INSTALLERS.

Careful design and quality finishes are not optional—they are an indispensable standard in everything we do. From design to delivery, our home lifts, doors and structures maintain a strong artisan heritage and are entirely manufactured in Italy.

Thanks to our technical expertise, we find the best design solutions and guide our clients every step of the way, creating products perfectly tailored to each project, making every installation truly bespoke. Each product is delivered partially pre-assembled and carefully packaged—an optimal choice that simplifies installation, reduces on-site time, and ensures a final result that meets expectations.

Attention to design requirements is fundamental:

all our systems comply with Directive 2006/42/EC (Machinery Directive), guaranteeing high safety and reliability standards. Moreover, they are certified by IMQ S.p.A., an accredited body that certifies the quality and conformity of production processes and products according to current European regulations, in particular EN 81-41:2010 relating to lifting platforms for persons with reduced mobility.

This certification offers solid reassurance to designers, installers and end customers, ensuring a controlled management system and continuous quality monitoring. In this way, we effectively meet all accessibility needs without compromising on delivering a lifting platform that becomes, in every sense, an elegant and functional furnishing feature.







THE SERIES — HOME LIFT



HLB

LOW CONSUMPTION,
SIMPLIFIED INSTALLATION,
UNMATCHED AESTHETICS.

Designed to ensure high efficiency and performance, the HLB features an electric motor with a gearbox combined with belt drive—an advanced, quiet technological solution.

Launched in 2018 to surpass the limits of hydraulic and screw-driven technologies, the HLB is the ideal choice for residential settings. It stands as the most versatile product in the Eltec Lift range, thanks to its high customisation potential, quiet operation and reliable performance.

The cabin dimensions can be tailored to the intended use, ensuring a perfect fit for both compact spaces and larger residential environments.

With refined lines, premium materials, and a wide range of finishes, the Eltec HLB suits renovations and new builds alike across residential, commercial, and public settings, guaranteeing seamless aesthetic and functional integration in any architectural environment.



FURTHER DETAILS IN THE
TECHNICAL CATALOGUE +



Fully customisable;

Compact dimensions: 180 mm pit depth, minimum headroom 2520 mm, special versions with 2390 mm headroom (with external control panel), maximum travel 20 m;

Minimum masonry shaft dimensions: W 1090 mm x D 910 mm (with side mechanics and single hinged landing door);

Minimum and maximum internal cabin dimensions: W 670 mm x D 720 mm / W 1250 mm x D 1400 mm;

Load capacity up to 400 kg; Speed of 0.15 m/s (EU countries) – 0.30 m/s (non-EU countries);

Up to three access points available;

Quiet operation, constant speed and odour-free;

Low consumption and guaranteed efficiency according to VDI 4707 Part 1:2009;
Certification no. NL20EPCL1003-588-18 dated 15-06-2020.

European energy class A.













HLB+

YOUR HLB. BOOSTED.

HLB+ is a solution designed to offer increased load capacity through the use of a gearless motor (450 kg) and the option to enlarge the cabin dimensions, providing greater space and comfort. The technical specifications and configurations of the HLB+ are tailored to the

structural and design requirements of each project.

By working closely with our clients, we define the applicable configurations together through a dedicated consultation, based on their specific design needs.





Fully customisable;

Compact dimensions: 180 mm pit depth, minimum headroom 2600 mm, maximum travel 20 m;

Minimum masonry shaft dimensions: W 1090 mm x D 1160 mm (with side mechanics and single hinged landing door);

Minimum and maximum internal cabin dimensions: W 670 mm x D 910 mm / W 1250 mm x D 1400 mm;

Load capacity up to 450 kg; Speed of 0.15 m/s (EU countries) – 0.30 m/s (non-EU countries);

Up to three access points available;

Quiet operation, constant speed and odour-free;

Low consumption and guaranteed efficiency according to VDI 4707 Part 1:2009;
Certification no. NL20EPCL1003-588-18 dated 15-06-2020.

European energy class A.





HLG

WHEN POWER IS NEEDED,
GEARLESS WITH LOW CONSUMPTION.

Meticulously crafted, this product features a high-powered motor that delivers outstanding performance, with a load capacity of up to 500 kg. Designed for specific applications, including outdoor environments, it offers extensive aesthetic customisation options, providing a solution that is not only high-

performing but also visually distinctive.

This solution is particularly suited for marine installations, with technical configurations assessed on a case-by-case basis according to application and design requirements.





Fully customisable (with the option to personalise the floor with client graphics);

Compact dimensions: 100 mm pit depth with minimum headroom 2710 mm, 270 mm pit depth with minimum headroom 2510 mm; Maximum travel 20 m;

Minimum masonry shaft dimensions: W 1125 mm x D 1090 mm (with side mechanics and single hinged landing door);

Minimum and maximum internal cabin dimension: W 740 mm x D 900 mm / W 1300 mm x D 1400 mm;

Load capacity up to 500 kg; Speed 0.15 m/s (EU countries) – 0.30 m/s (non-EU countries);

Up to three access points available;

Quiet operation, constant speed and odour-free;

Low consumption, high load capacity;

European energy class A.















DOORS



ELSA

Single swing door featuring smooth, clean lines that set it apart from all others. Special seals make it suitable for outdoor installations as well.

Concealed hinges;

Suspended glass;

Fully aluminium frame for lightness and durability;

Push-to-open and self-closing mechanism, or fully automatic operation with a motor housed discreetly within the frame;

Freedom to customise both frame and glass.





ELETTRA

Double swing door that, thanks to its elegance and modern design, is discreet and perfectly integrated between the lift and its environment.

The automatic opening and closing of the two leaves reduces space requirements and makes operation easier.

Concealed hinges;

Suspended glass;

Fully aluminium frame for lightness and durability;

Automatic opening and closing with motor discreetly housed within the frame;

Full customisation options for both frame and glass.





WINGS

Single swing aluminium door with a minimalist design and large visible glass panel. The door leaf profile also functions as a handle, incorporating a discreet and functional LED lighting compartment.

Concealed hinges and handle integrated into the door leaf;

Fully aluminium frame for lightness and durability;

Customisation options available for both frame and glass.





B-WINGS

The Wings door in full glass version becomes B-Wings. It features the same characteristics as the Wings door, but with a more delicate frame.

Concealed hinges and handle integrated into the door leaf;

Fully aluminium frame for lightness and durability;

Customisation options for both frame and glass;

Full glass version.





REVERSE

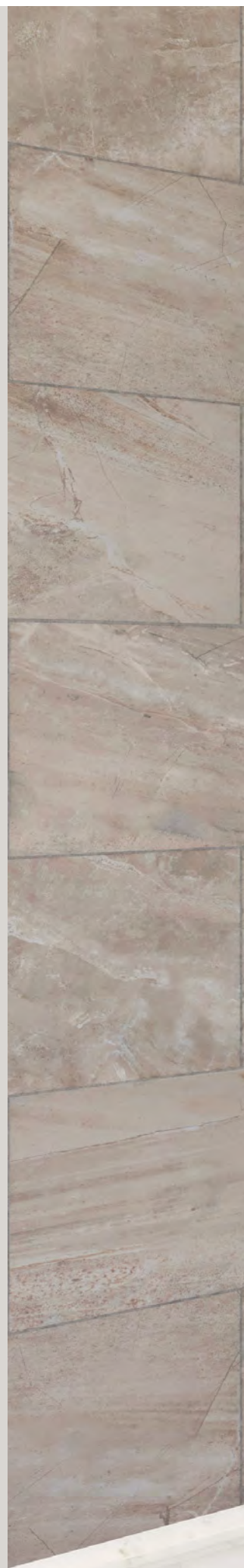
Single swing aluminium door featuring squared profiles, equipped with a system that allows the reversal of the opening direction.

Concealed hinges and handle integrated into the door leaf;

Fully aluminium frame for lightness and durability;

Customisation options for both frame and glass;

Can be clad with panels in various materials.





ELTEC SELECTION

Eltec guarantees a wide range of options, thanks also to accredited partners selected for quality and compatibility.

The combination with the cabin and intended use will be assessed based on the specific project requirements.

FULL GLASS

Modern sliding door with large glass panels.

Customisation options available for frame and glass;

Essential, minimalist design.



CLASSIC SLIDING

Door with a classic and minimalist style. Its available combinations allow seamless integration into any architectural context.

Classic style;

Available in 2 or 3 panels (side sliding) or 2 or 4 panels with central opening.



BIG VISION

Sliding door with metal frame and laminated safety glass panels.

Strong, defined lines;

Customisation options for both frame and glass.



SOLID SWING DOOR

Single swing landing door, featuring a minimalist design. Practical and unobtrusive.

Wide customisation options for finishes and accessories;

Available with EI 60 and EI 120 fire resistance ratings.



SWING DOOR

Single swing landing door with various glazing options.

Wide customisation options for finishes and accessories;

Minimalist yet light-filled design.



FOLDING DOOR

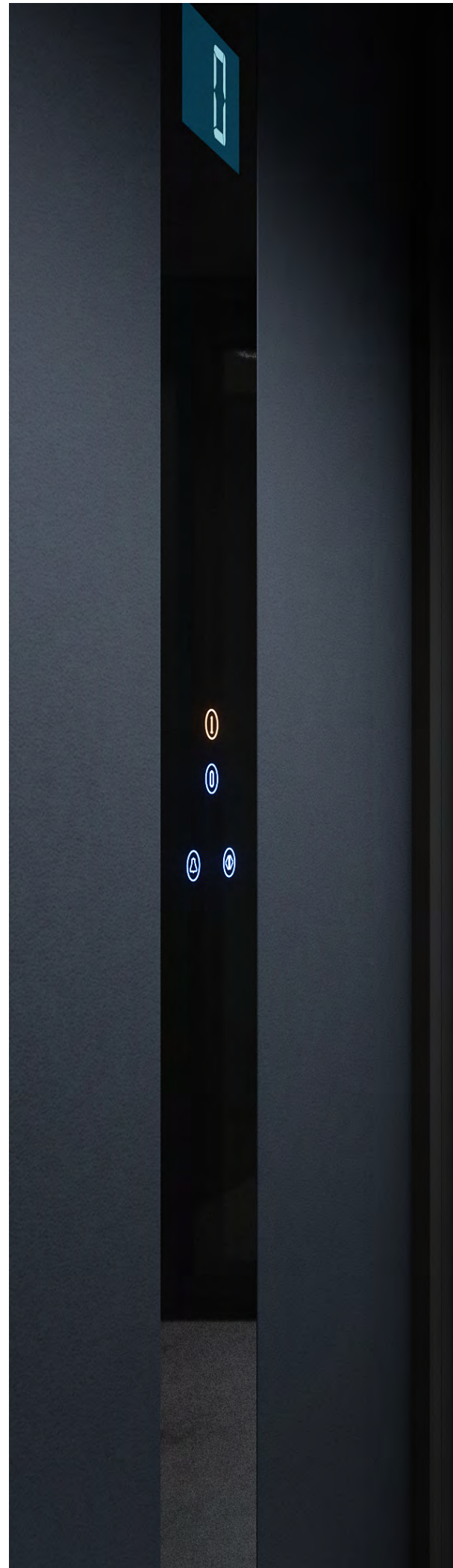
Folding cabin door available glazed or solid.

Classic style;

Minimalist design with a bright feel for the glazed option.



CABINS AND FINISHES

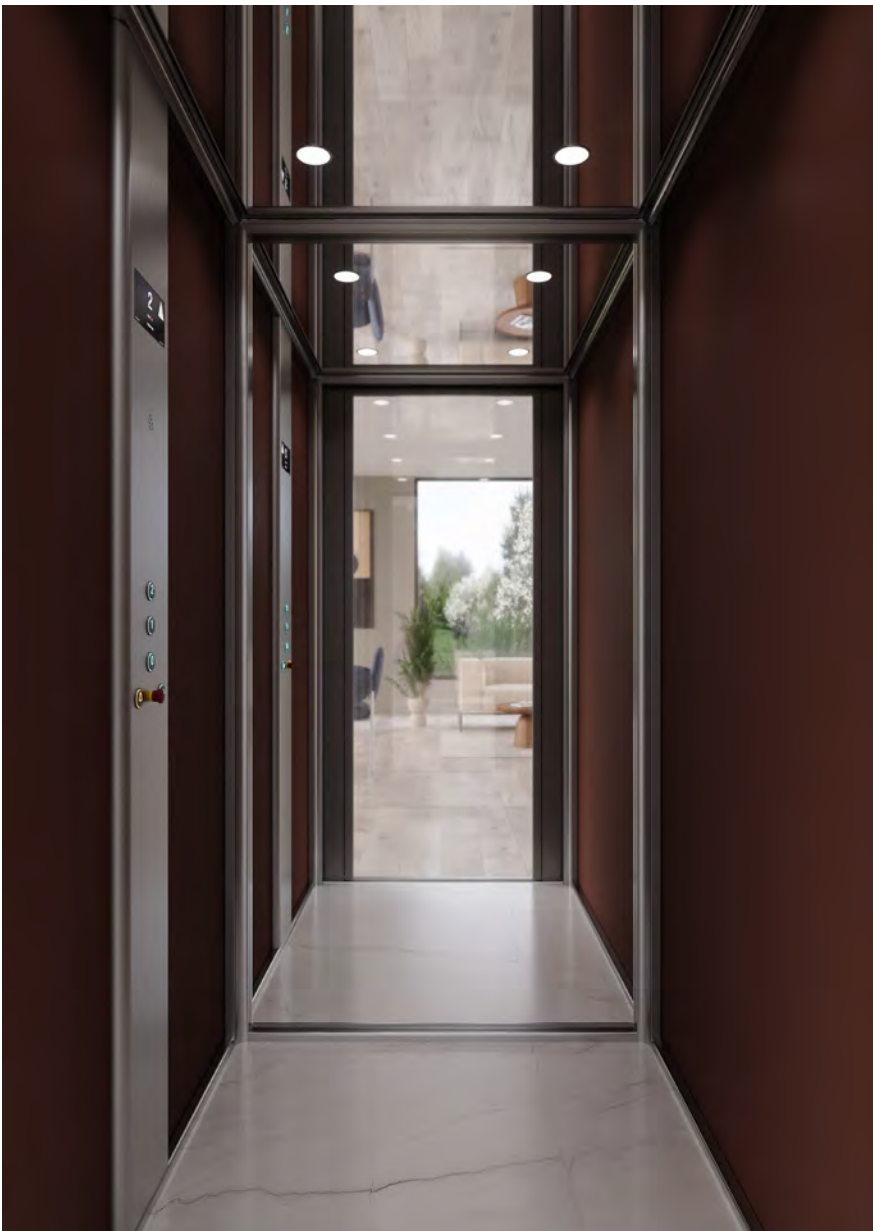




OUR SELECTION

We guarantee the best aesthetic outcome through a careful selection of premium materials, chosen for their performance and visual appeal.

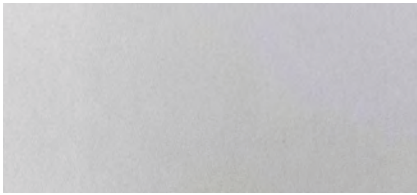
Presented here are finishes carefully chosen and frequently preferred by our clients; additional options are available upon request to suit specific design needs.





CABIN WALLS

LAMINATE PANELS / CLASSIC SOLIDS



C0001 - Silver Std STANDARD



C0018 - 405 Porcelain white Fin.Sei



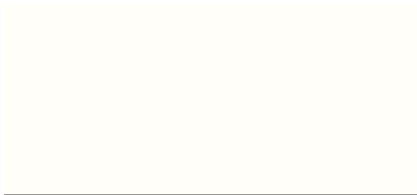
1816 - Sahara Beige



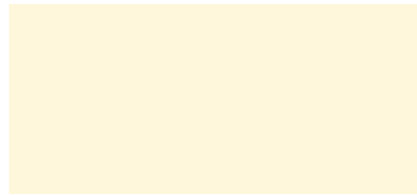
C0052 - 871 - Dark Grey Fin.Sei



1845 - Sherwood Fin. Sei



U11026 - Cristal White



U11509 - Magnolia



U12204 - Manhattan

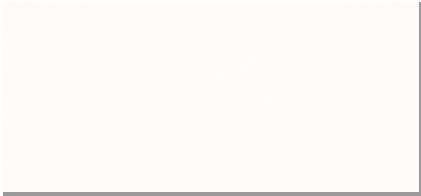


U16051 - Siena Red

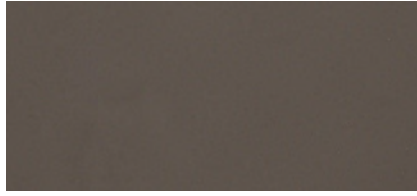
FURTHER FINISHES
AVAILABLE ON REQUEST +



LAMINATE PANELS / PREMIUM SOLIDS



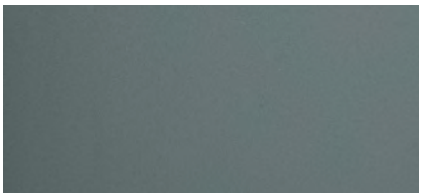
C0074 - 0029 Malè White



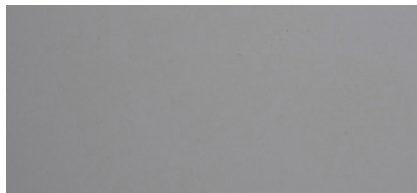
C0075 - 0718 London Grey



C0076 - 0720 Ingo Black



C0077 - 0750 Comodoro Green



C0078 - 0752 Antrim. Grey



C0079 - 0754 Blue Fes.

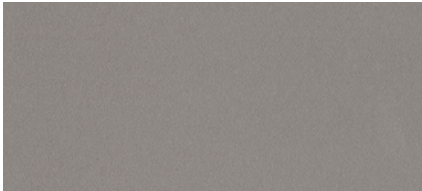
FURTHER FINISHES
AVAILABLE ON REQUEST +



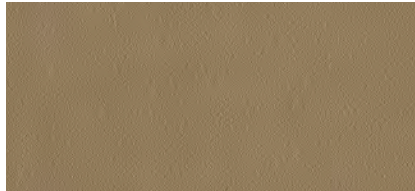




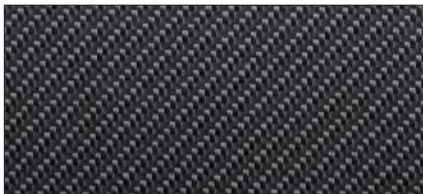
LAMINATE PANELS / EFFECTS



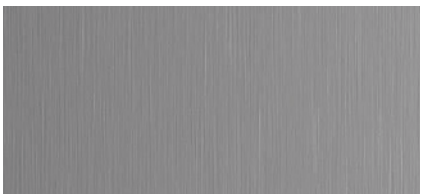
C0058 - 1920 Saturn Fin. Satin



C0059 - 1921 Venus Fin. Satin



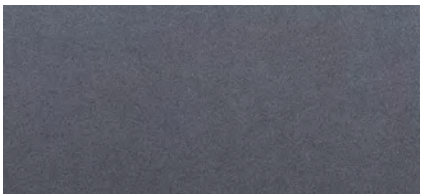
C0064 - 571 Black Carbon Fin. Papier



C0066 - 873 Silver Fin. Satin



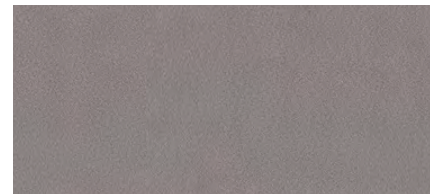
C0067 - 874 Gold Fin. Satin



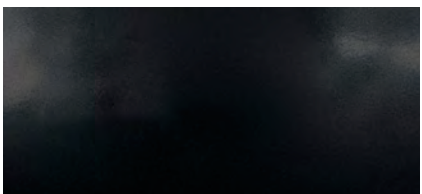
C0068 - 1927 Mercury Fin. Papier



C0069 - 1930 Mars Fin. Clim



567 "Ghisa" Fin. Mandarin



C0023 - 421 Black Fin. Luc2

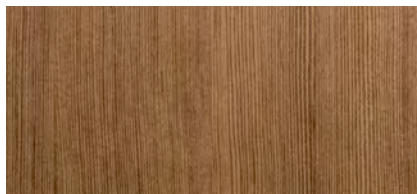
FURTHER FINISHES
AVAILABLE ON REQUEST +



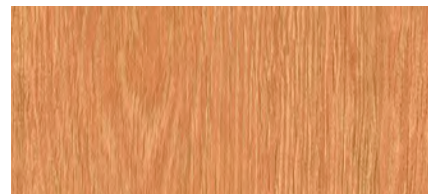
LAMINATE PANELS / WOODGRAINS



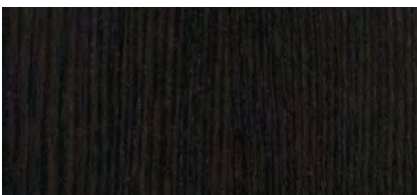
C0062 - 370 Fine Elm Fin. Root



C0063 - 387 Douglas Fin. Microline



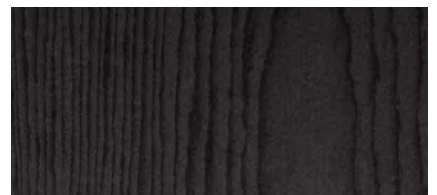
602 Boeamia Oak



C0065 - 657 America Oak Fin. Holz



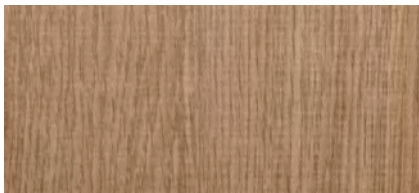
C0050 - 1382 Transversal Tobacco
Fin. Cross



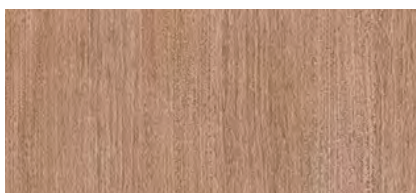
C0072 - 1959 Phoenix Amon Fin.
Root



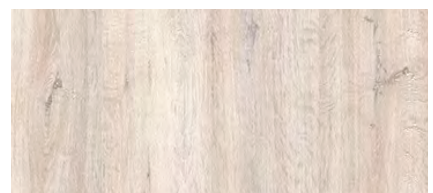
LAMINATE PANELS / WOODGRAINS



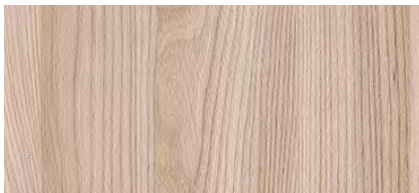
C0017 - 386 National OakFin. Aquarama



631 Teak Plissé Fin. Grainwood



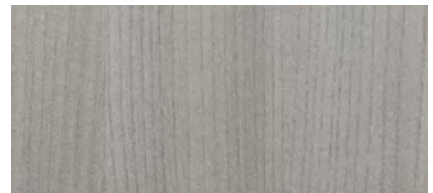
670 - Antivo Oak



1394 Pearl Elm Fin. Root



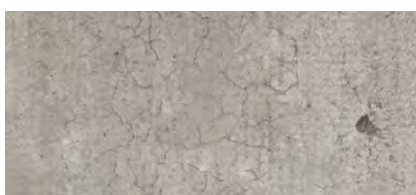
1381 Transversal Oak Fin. Cross



C0071 - 1955 - Montale Noli Fin. Root



C0073 - 1961 Aurora Norway Fin. Root



C0052 - 1451 Urban Style Fin. Climb

FURTHER FINISHES
AVAILABLE ON REQUEST +



COMPOSITE PANELS/ METALS

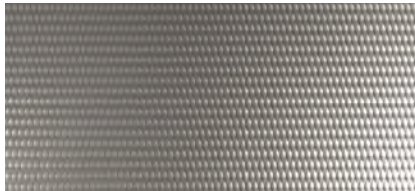


C0013 Inox SB - STANDARD

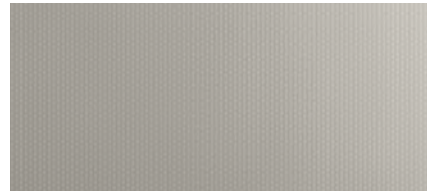
/ PREMIUM METALS



C0014 Inox Polished 7



C0015 Inox 2WL Polished



C0016 Inox Lino Polished

FURTHER FINISHES
AVAILABLE ON REQUEST +

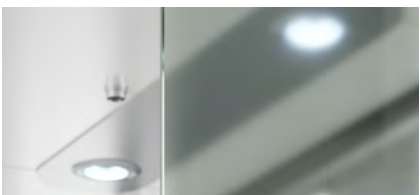


SURFACES / GLASSES AND MIRRORS



Laminated Transparent / STANDARD

/ CLASSICI



Laminated Satin



Laminated White Milk

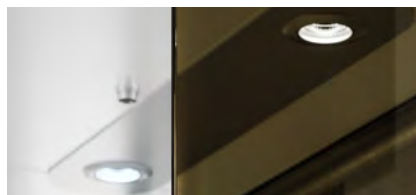


Laminated Fumè

/ PREMIUM

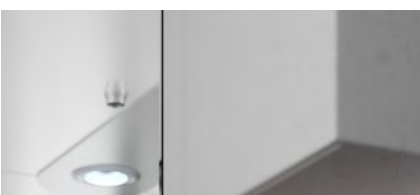


Laminated Stop.Sol Silver

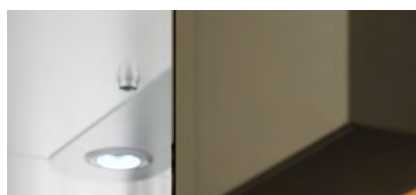


Laminated Stop.Sol Bronze

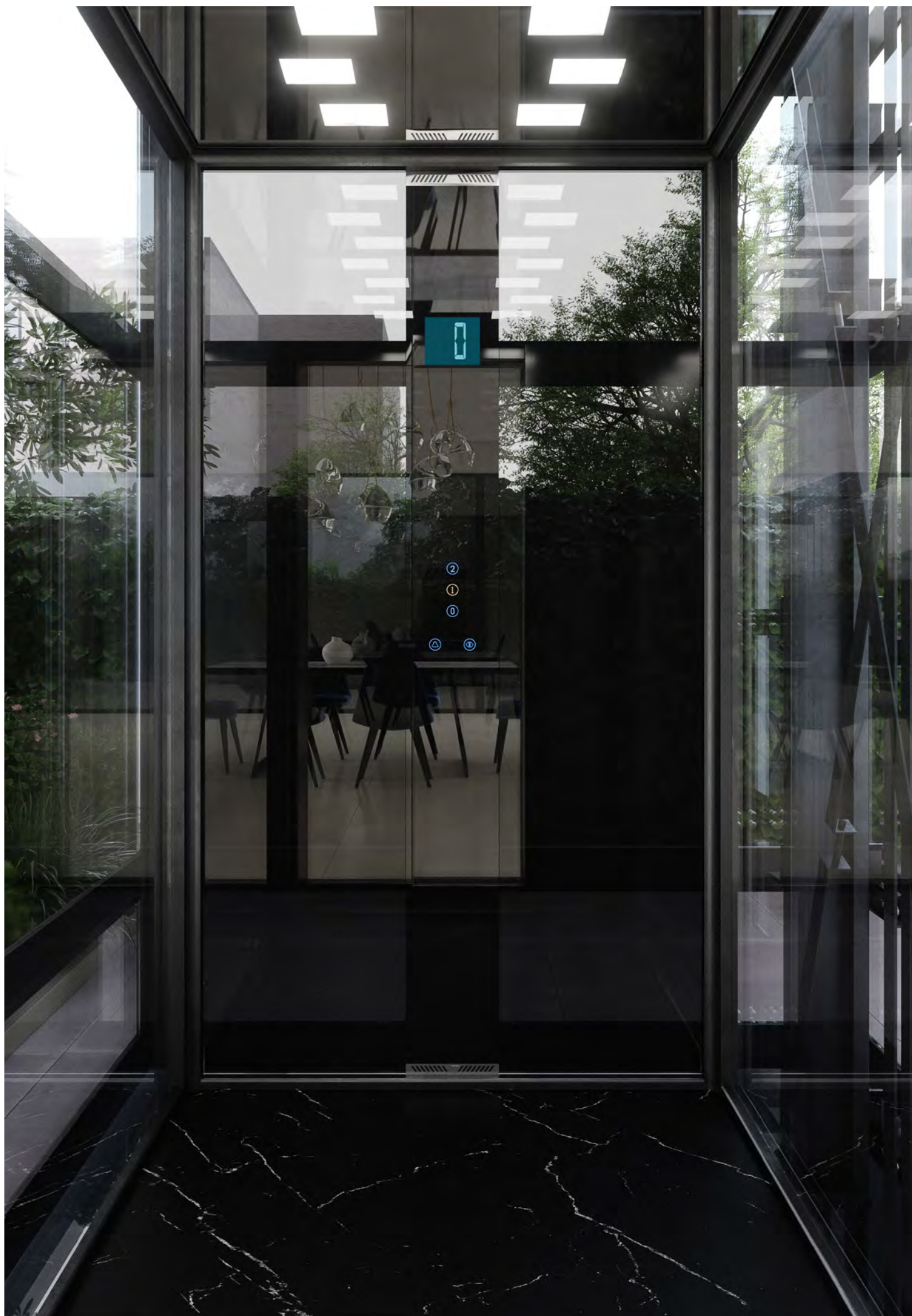
/ MIRRORS



Laminated Mirror - Silver



Laminated Mirror - Bronze



CABIN PROFILES

STRUCTURE / ANODISED



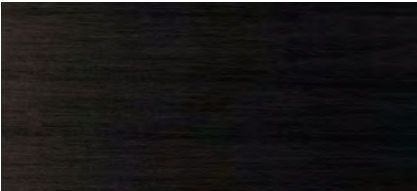
B0081 - OXNA / STANDARD



B0070 - INOXS



B0085 - S5S

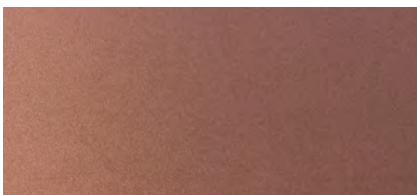


B0089 - S9E

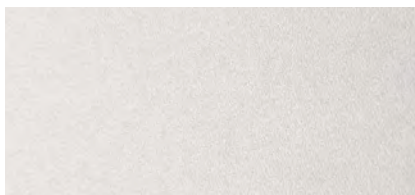


B0112 - OROML

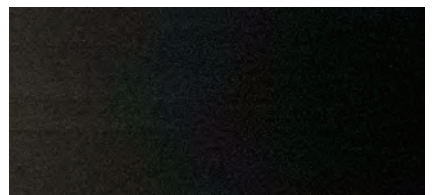
/ ANODISED - PREMIUM OPTIONS



B0072 - K4P Corall



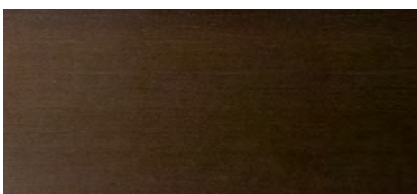
B0080 - ARP



B0092 - S9P



B0100 - OROMP



B0086 - S5SR



B0091 - S9LR

FURTHER FINISHES
AVAILABLE ON REQUEST +



STRUCTURE / RAL COLOUR PAINT



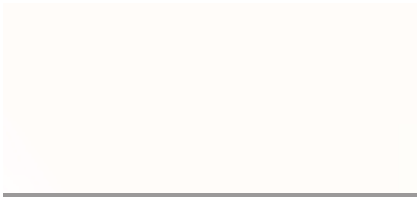
B0017 -RAL 7016 Matte



B0027 - RAL 7035 Gloss



RAL 7039



B0096 - WH02 White



B0048 -RAL 9005 Semi-Gloss



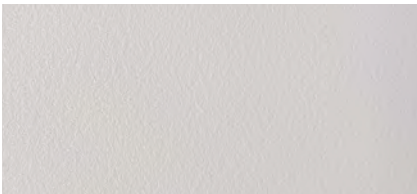
B0102 - Structura 9010T2



B0103 - Structura 7016T2

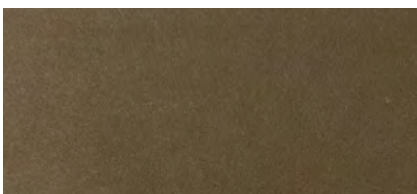


B0104 - Structura 90005T2



B0105 - Structura 7035T2

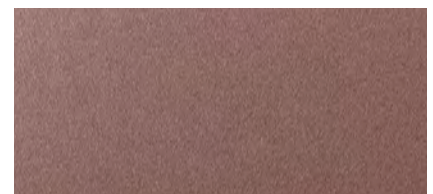
/ RAL COLOUR PAINT - PREMIUM OPTIONS



B0106 - Collection Bronze



B0107 - Collection Ambre



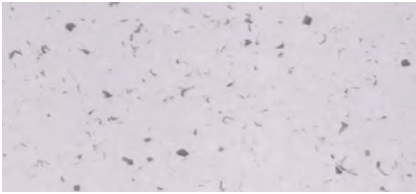
B0108 - Collection Djibou

FURTHER FINISHES
AVAILABLE ON REQUEST +

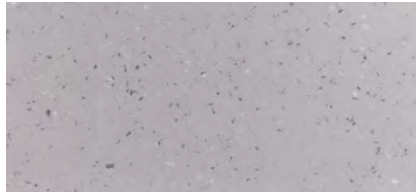


FLOORS

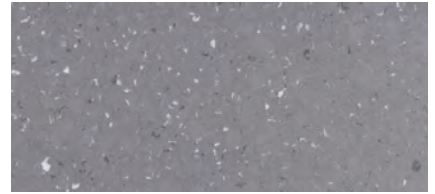
BASIC / PVC



PVC 2408 Halley

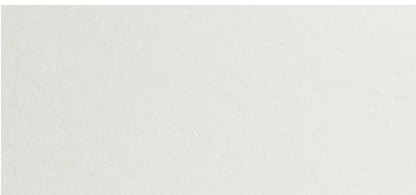


PVC 2411 Catallina

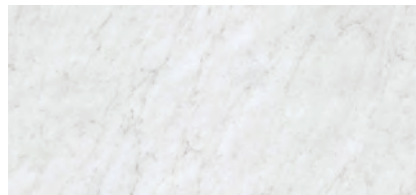


PVC 2430 Panstarrs

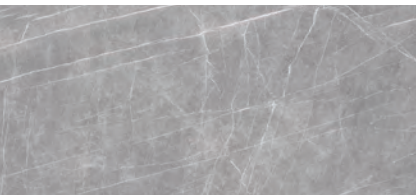
SINTERED STONE / STANDARD



A0028 Neolith Just White - Silk



A0026 Neolith Bianco Carrara - Silk



A0027 Neolith Zaha Stone - Silk



A0027 Neolith Nero - Satin

FURTHER FINISHES
AVAILABLE ON REQUEST +



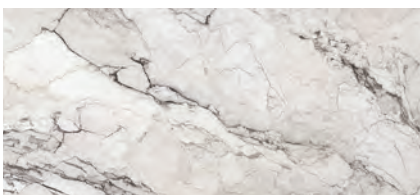
SINTERED STONE / PREMIUM



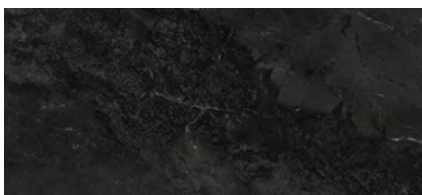
A0013 Neolith Estuario - Polished



A0023 Calacatta Luxe - Polished



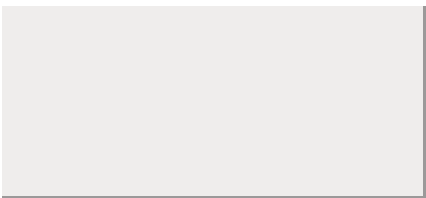
A0030 Neolith Colorado Dunes - Silk



A0033 Neolith Layla - Polished

FURTHER FINISHES
AVAILABLE ON REQUEST +

CEILINGS



White – standard colour for the 2-spotlight model.

METAL FINISHES



C0013 Inox SB



C0014 Inox Polished 7

2 Spotlights – available in white only.



4 Spotlights



6 Spotlights



Checked



Diamond



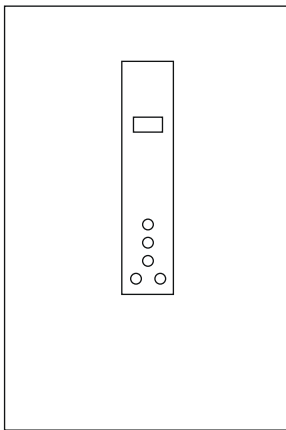
CONTROL PANELS

Minimalist and discreet, the control panels selected by Eltec are available in the same

finishes as the structures, with various combinations of buttons and screens.

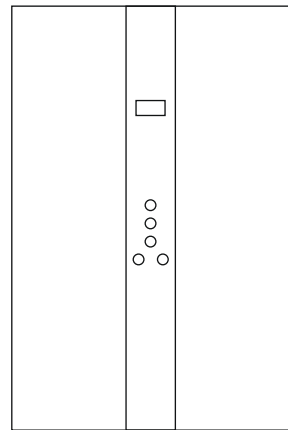
STANDARD

At mid-height, practical, discreet, and customisable.



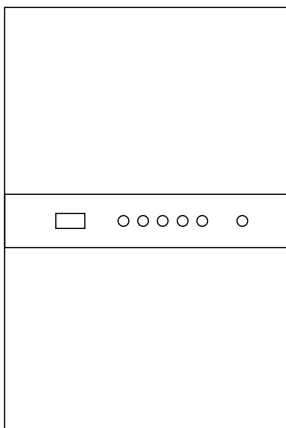
FULL HEIGHT

It becomes a distinctive design element of the cabin.



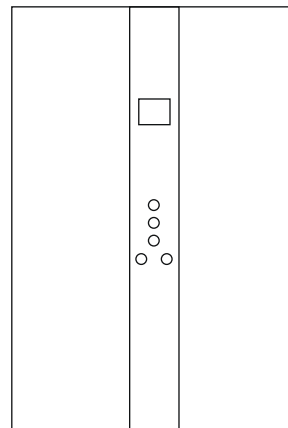
HORIZONTAL

Practical and essential. Ideal for people with reduced mobility.



VENICE TOUCH

Elegant, glazed, and equipped with touch screen buttons; available in four different variants.



Black float



White extraclear



Mirrored champagne



Mirrored bronze





ACCESSORIES

Details that make the difference. Eltec's selection continues with a range of technical details and

accessories, designed to be combined for a complete installation.

CONTROL PANELS / ACCESSORIES

DISPLAY TRICOLOR BLUE
5" LCD



DISPLAY IRIS
7" TFT



VEGA BUTTONS
Venus model



+ INTERCOM

Emergency device

- Button available on various models -

VEGA BUTTONS
Giunone model



VEGA KEY



I-BUTTON



CABIN INTERIOR

FULL-HEIGHT MIRROR
Custom-sized to fit the wall,
enhancing light and perceived space.



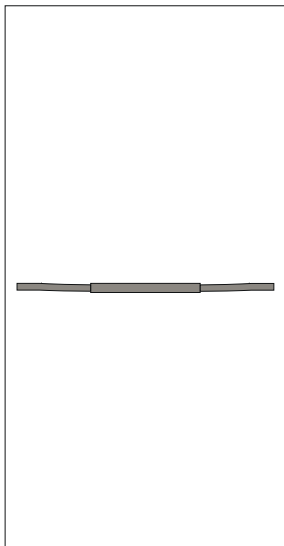
MIRROR
500*1600 mm



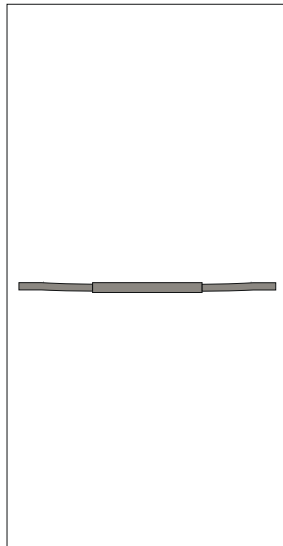
MIRROR
700*900 mm



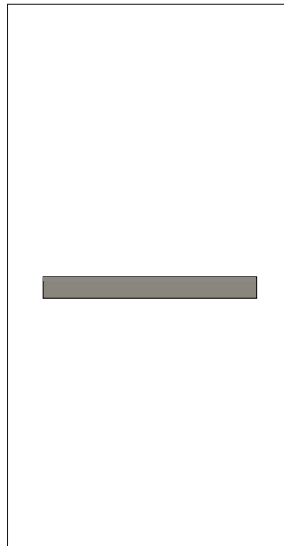
D25 HANDRAIL



D32 HANDRAIL



VITA MODEL HANDRAIL
Customisable colour options.



STRUCTURES





TA

SEAMLESS FINISH DESIGN.

TA is a load-bearing structure for home lifts entirely made of aluminium, featuring a modern and harmonious aesthetic (Ultra-Smooth design by Eltec).

Aluminium combines lightness and flexibility with outstanding strength and structural solidity. It is highly resistant to corrosion, maintenance-free, and ensures long-lasting performance over time.

The TA structure is quick and easy to install thanks to its exclusive patented interlocking system, with

no visible screws or exposed wiring. It can be finished with a wide selection of anodised treatments and colour options, allowing seamless integration into different architectural contexts.

Designed to accommodate lifting platforms as well as electric or hydraulic elevators, TA Freestanding supports loads of up to 630 kg, reaches speeds of 1 m/s, and can develop heights of up to 20 m. Water-resistant by design, it is also perfectly suited for outdoor installations.





MODULAR: Simple construction with a patented system and a continuous, uninterrupted design;

CONFIGURABLE: The structure can be dimensioned according to specific project requirements;

FAST, PRACTICAL AND OPTIMISED: Dedicated support is provided about the installation process;

CLADDING OPTIONS: Flush with the external or Internal side;

COMPATIBLE: Suitable for all our lifts, for both indoor and outdoor installations.

AU

TOTAL DESIGN FLEXIBILITY.

AU is an aluminium structure designed to simplify the integration of a home lift in private residences, small buildings, and existing properties, including older constructions.

Its straightforward construction and intuitive crossbeam fixing system allow the structure to be adapted directly on site, according to specific project requirements. AU supports a maximum travel height of up to 20 metres.

The use of aluminium ensures a slim yet robust solution: lightweight, modular components are connected using special hammer-head bolts, guaranteeing structural stability, fast installation, and maximum flexibility. The

modular system is fully compatible with all platforms and supports a wide range of design solutions.

Designed to be clad with wood or plasterboard panels, the AU structure allows full customisation of the shaft walls, ensuring seamless integration with the finishes of the surrounding spaces. Thanks to targeted training and an optimised fixing system, AU reduces installation time and costs compared to traditional structures, while maintaining excellent ease of cladding.

Certified to ensure the highest safety standards for home lifts, AU combines quality, efficiency, and design freedom in a lightweight and reliable solution.





MODULAR AND ADAPTABLE ON SITE: Simple construction, especially thanks to the intuitive crossbeam fixing system;

CONFIGURABLE: The structure can be sized according to various needs, enabling significant savings on masonry work;

COST-EFFECTIVE: Standardisation and modularity reduce costs compared to traditional structures;

FAST, PRACTICAL AND OPTIMISED: The AU kit is designed, engineered, and certified for the lift, delivered with partially pre-assembled components to simplify installation;

LIGHTWEIGHT AND ROBUST: Aluminium ensures maximum strength with minimal weight.;

CLADDING-FRIENDLY: Ideal for finishing with plasterboard or wood panels;

COMPATIBLE: Suitable for all configurations.



THE COMPANY



DEDICATED AREAS

The Eltec Lift headquarters houses technical, administrative, and IT offices alongside spacious production areas dedicated to the development and manufacturing of our solutions, where diverse expertise comes together daily to transform ideas into reliable systems.

Inside, our showroom offers professionals and companies the opportunity to explore our home lifts up close, appreciating finishes, construction details, and technical features in a setting that blends design and engineering.

The 40 m² Training Area serves as the starting point for hands-on support: it is here that the

practical installation journey begins, with structures and systems assembled step by step to provide a clear understanding of operational procedures.

Visits are available upon request and are aimed at those who want to discover Eltec Lift through its products and people. Clients and partners are welcomed in our beautiful region, with a comfortable facility located close to both the Trieste airport and the company, ensuring convenience and comfort during their stay.

Here, learning turns into trust, and every collaboration is born from a shared commitment founded on mutual respect.



AREAS / CUSTOMER PORTAL

Our Eltec Hub portal is designed specifically for installers and designers, enabling fast, precise, and independent work.

It provides technical resources and dedicated support at every project stage, from system definition to post-sales assistance. Users can input measurements, preferences, and finish specifications to generate a personalised project tailored to the site's requirements. The platform allows autonomous

creation of quotes, verification of cabin, shaft, and door dimensions, real-time delivery tracking, and order progress updates with production photos—all just a click away.

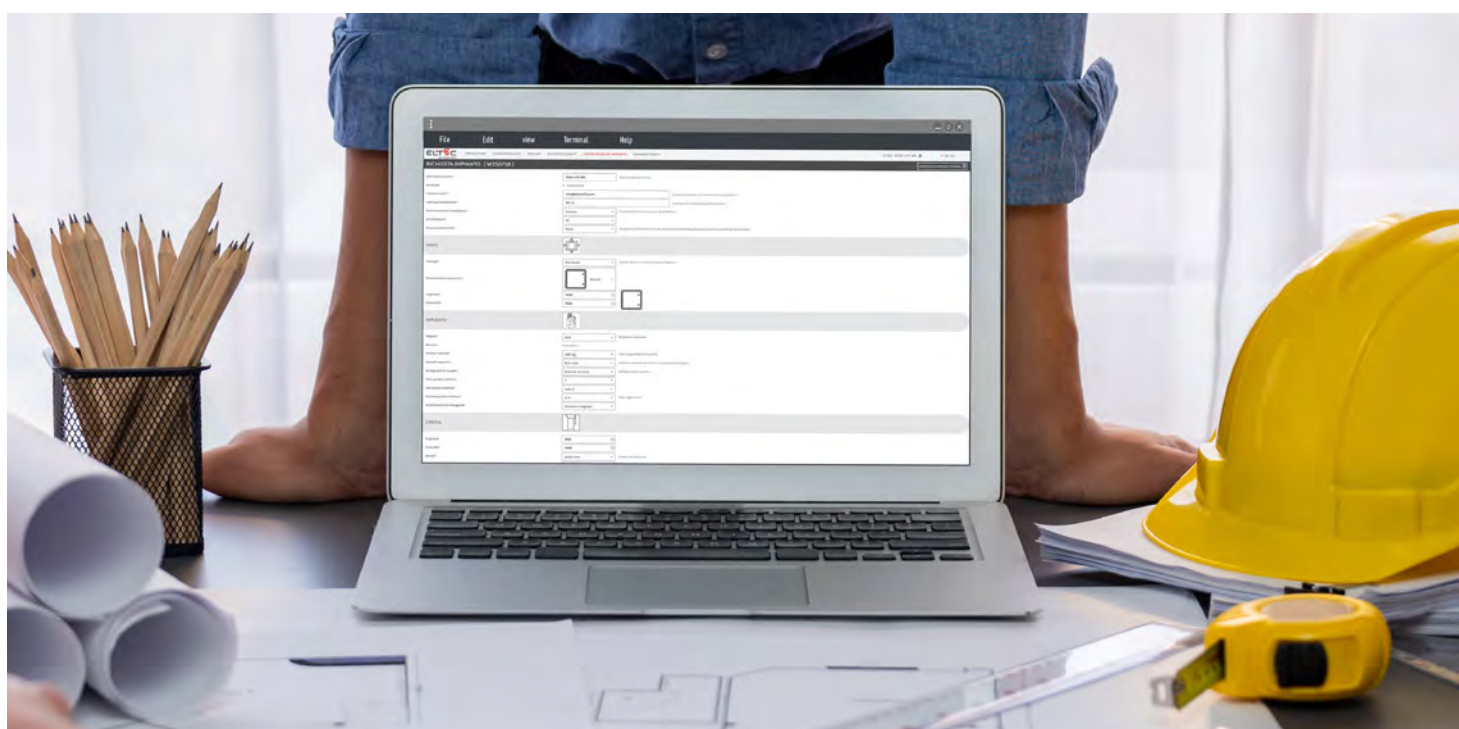
Additionally, Eltec Hub provides direct access to digital documents related to your installations, always available for download.

An indispensable ally for simpler, faster, and more independent work.

+ DEDICATED SERVICES:
Eltec supports professionals at every stage — from selection and customization to system design.

+ ON-SITE SUPPORT DURING INSTALLATION:
Real-time technical assistance via dedicated channels.

+ PROJECT PROGRESS TRACKING:
Option to monitor the overall status of orders and the project.



A CONCRETE APPROACH TO SUSTAINABILITY

A REAL COMMITMENT INTEGRATED INTO EVERY STEP OF OUR PRODUCTION PROCESS.

We continuously analyse our processes, questioning ourselves daily on how to improve efficiency and environmental sustainability. To shape our products, we use aluminium and glass—durable and fully recyclable materials chosen to minimise environmental impact throughout the entire lifecycle of the installation. We prioritise solutions that reduce waste and promote resource reuse.

This approach extends beyond the finished product to the entire production process, which is constantly optimised to reduce consumption, emissions, and unnecessary impacts.

We have invested in a state-of-the-art photovoltaic system, featuring 230 bifacial modules spread over approximately 700 m², with a total capacity of 133.40 kWp. This advanced technology, supported by real-time digital monitoring systems, covers up to 70% of our annual energy needs, optimising production even under less-than-ideal conditions and reducing emissions with a clear eye on the future.

At the same time, our packaging is designed to minimise environmental impact. Each home lift is shipped in a single optimised crate of about 4 m³,

engineered to contain the entire installation without unnecessary packaging or fragmented shipments.

The crates are made from wood panels sourced exclusively from recycled material and bonded with formaldehyde-free adhesives, limiting the use of virgin raw materials and reducing waste.

This compactness also results in efficient logistics optimisation: road transport, containers, and other modes are organised to reduce emissions and improve overall efficiency.

Inside the crates, components are arranged to facilitate on-site assembly, making installation simpler, faster, and more efficient, with reduced environmental impact related both to transport and material handling.

Our production is further supported by high-efficiency machinery that requires minimal use of lubricating and cooling oil, contributing to significant waste reduction.

This integrated approach combines innovation, efficiency, and sustainability, minimising waste throughout the entire supply chain—from material selection, through production and delivery, to final installation.

Numbers:

230 modules
bifacial photovoltaic, 580 Wp each.

133,40 kWp
total power capacity.

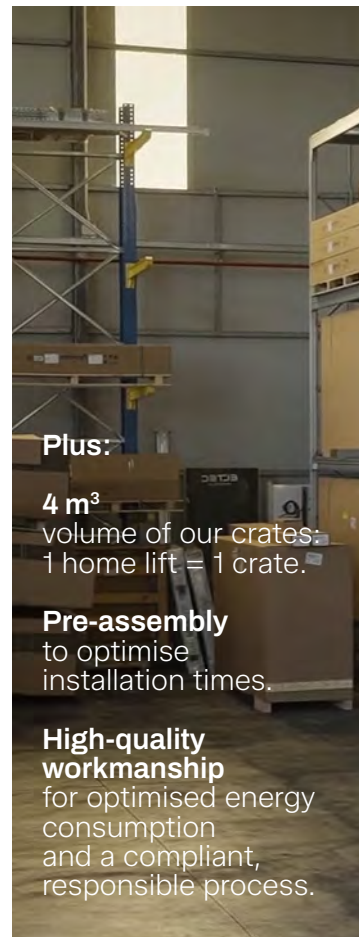
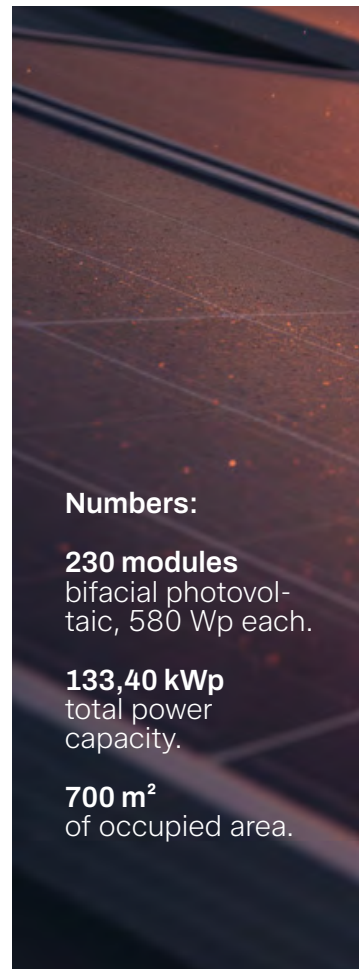
700 m²
of occupied area.

Plus:

4 m³
volume of our crates:
1 home lift = 1 crate.

Pre-assembly
to optimise
installation times.

**High-quality
workmanship**
for optimised energy
consumption
and a compliant,
responsible process.





We remain at your disposal
to provide all the information
you may require to start
shaping quality together.



ELTEC LIFT SRL

Via Antonio Tambarin, 36
34077 Ronchi dei Legionari
Gorizia (GO) - Italy

+39 0481 776515
info@elteclift.com
elteclift.com

IT



La nostra casa si trova
a Ronchi dei Legionari
Friuli Venezia Giulia
-Italia-

elteclift.com